



BED PRESSURE MAPPING

 Bulldog sensor
technology

Increased value

Scientific validity

Performance
& effectivity



WELCOME TO
THE WORLD OF

 **FLEX**

www.rsscan.com



MASTERS IN PRESSURE MAPPING

An outstanding tool to evaluate the interaction between the human body and the surface that supports it on beds and mattresses. Over the years the outstanding technology has matured as an appreciated tool for professionals who are involved in decision making for people's choice for their bed at home, but certainly for hospitalized clients that have an increased need for comfort.

For various significant reasons the selection of a mattress is a challenge. Hospitalized persons require devices which accommodate them comfortably but which also ensure that the client is safe. The probably most important challenge is in the prevention of acquiring secondary impairments by skeletal deformation and skin breakdown. **mFLEX® is a user friendly tool that provides objective data that help the clinical professional to serve the client better.** Objective data in addition to the information collected through verbal, visual and palpative communication lead to better decisions in the interest of the client, ensuring a optimal functional use of the device under exclusion of risks.

Worldwide thousands of medical doctors, therapists and clinical engineers have appreciated the unique features of such a technology. Specially in the field of pressure sore prevention and treatment, an in-depth knowledge of the interaction between body and mattress at the interface level can help to **optimize the support surface for the person at risk.**

In developing products for beds and mattresses but certainly also in testing these devices and analyzing their physical properties, researchers and industrial technologist depend on the **unique properties of the BULL DOG sensor** that is used in the mFLEX® sensor units. In order to meet the requirements of the professionals in clinical, industrial and in research environments mFLEX® offers a range of sensor options in dimensions and resolutions. In all thinkable situations a sensor unit can be provided that meets the requirements of the user.

Compose your ideal mFLEX® Pressure Mapping System by combining the mFLEX® interface module with the optimal sensor unit and the relevant calibration kit.

1 mFLEX COMPUTER INTERFACE MODULE

Dimensions: 4 cm x 14 cm x 15 cm

Weight: 490 grams

Input: Two 34 pin Insulator Displacement Connectors

Output: USB and RJ-45 (8 wire cable Serial)

Power Supply: 9 Volt, 500 mAmp AC/DC converter

Indicator lights: power, diagnostics and scan rate

Switch: built in trigger for initiating remote reading

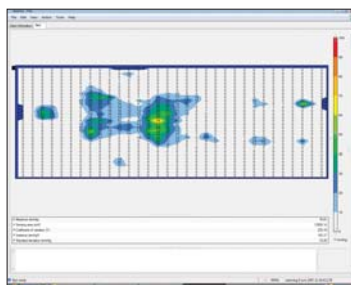
- PC connecting cables Serial and USB
- Powersupply converts from 220 to 9 Volt
- Manual trigger and battery holder for initiating remote reading
- Web belt
- mFLEX software and manual

2 BED MAT SPECIFICATIONS

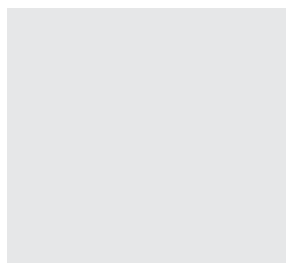
mFLEX mat type:	TORSO ACC 5	BED ACC 4 medical Bed	BED ACC 6 medical Hi-Res Bed
<i>mFLEX mat name:</i>	Torso	Bed	Hi-Res Bed
<i>Serial number prefix:</i>	4010	3010	3020
<i>Sensing area length (mm):</i>	958,9	1920	1920
<i>Sensing area width (mm):</i>	675	762	762
<i>Sensor arrangement:</i>	32 x 16	32 x 32	32 x 64
<i>Standard calibration range (mmHg):</i>	100	100	100
<i>Finished mat length (mm):</i>	1060.5 / 41.36"	2032.0 / 79.25"	2032.0 / 79.25"
<i>Finished mat width (mm):</i>	787.4 / 30.6"	873.0 / 34.4"	873.0 / 34.4"

3 CALIBRATION JIG TYPES

Article nr. Name
 ACC 16: Small
 ACC 18: Medium/Large
 ACC 19: Long
 ACC 20: High Pressure



Local distribution:



Distribution worldwide:
 RSscan International head quarters

RSscan International NV
 Lammerdries-Oost 27
 B-2250 Olen
 Belgium

Voice: +32 (0)14-23 20 31
 Fax: +32 (0)14-23 53 90
info@rsscan.com
www.rsscan.com



making an impression